

# Mobility First! - ASEF Cultural Mobility Initiative

A TRAVEL GRANT FOR ARTISTS AND CULTURAL PROFESSIONALS

YEAR 3  
**2019**

REVIEW



**1,200** from **50** ASEM COUNTRIES  
APPLICATIONS

**144** from **29** ASEM COUNTRIES  
SUPPORTED PRACTITIONERS

**57** in **28** ASEM COUNTRIES  
EVENTS

NUMBER OF ASIANS AND EUROPEANS SUPPORTED

**83%**  
ASIANS

**17%**  
EUROPEANS

**Mobility First! supports a wide variety of activity types:**

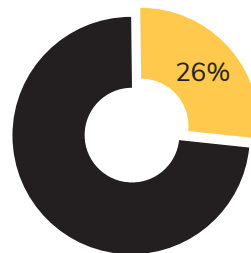
- Arts residencies
- Partnership meetings
- Workshop / trainings
- Practice-led research trips
- Conference / forums
- "Go and see" / short-term exploration / networking
- Festival / biennales

**Priority is given to applicants whose applications more closely fulfil Mobility First!'s focus areas, which are:**

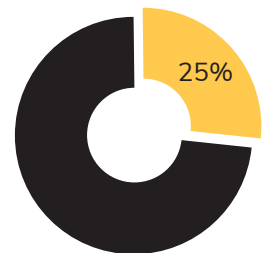
- Knowledge exchange / skills transfer
- Local development
- Innovation in arts and culture (including the intersection of art with other sectors)
- Art and social issues: the role of art and artists in society

In the pursuit of:

**SUSTAINABLE DEVELOPMENT GOALS**



**37 out of 144** grantees **come from periphery cities**



**36 out of 144** grantees **went to periphery cities**

**45%**  
FEMALES



**55%**  
MALES



# SPECIAL OPEN CALLS



# C

# Fonds

## PRINCE CLAUS FUND

- Special open call launched for young artists, women and minority groups.
- 25 cultural professionals were supported to travel to 20 events in 14 ASEM countries.
- 15 out of 25 supported practitioners are female (60%)
- 19 out of 25 are young professionals (76%)



CAMBODIAN LIVING ARTS International Program

## CAMBODIAN LIVING ARTS

- 2 special open calls launched
  - » For artists working in precarious conditions and are affected by present day conflict
  - » Promoting South-South mobility
- 8 cultural professionals were supported to travel to 6 events in 5 ASEM countries



Norwegian Ministry of Foreign Affairs

## NORWEGIAN MINISTRY OF FOREIGN AFFAIRS

- Special open call launched for cultural professionals who are nationals of Bangladesh, India, Lao PDR, Myanmar, Pakistan, and Viet Nam.

### IN PARTNERSHIP WITH



ASIAN FILM ARCHIVE



MoT+++



LATVIJAS JAUNA TEĀTRA INSTITŪTS



Rai.D Collective



SOUTHEAST ASIA FICTION FILM LAB



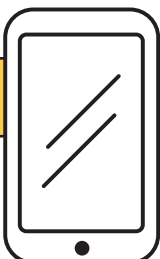
**PTA** MAYA DANCE THEATRE



KADIST

YAYASAN BIENNALE YOGYAKARTA

Madrid #0



#ASEFculture #MobilityFirst #Supportcreativity

**Mobility First!** – ASEF Cultural Mobility Initiative is publicly funded by 51 Asian and European countries, the ASEAN Secretariat and the European Union, under the Asia-Europe Meeting (ASEM), an intergovernmental, political dialogue process.